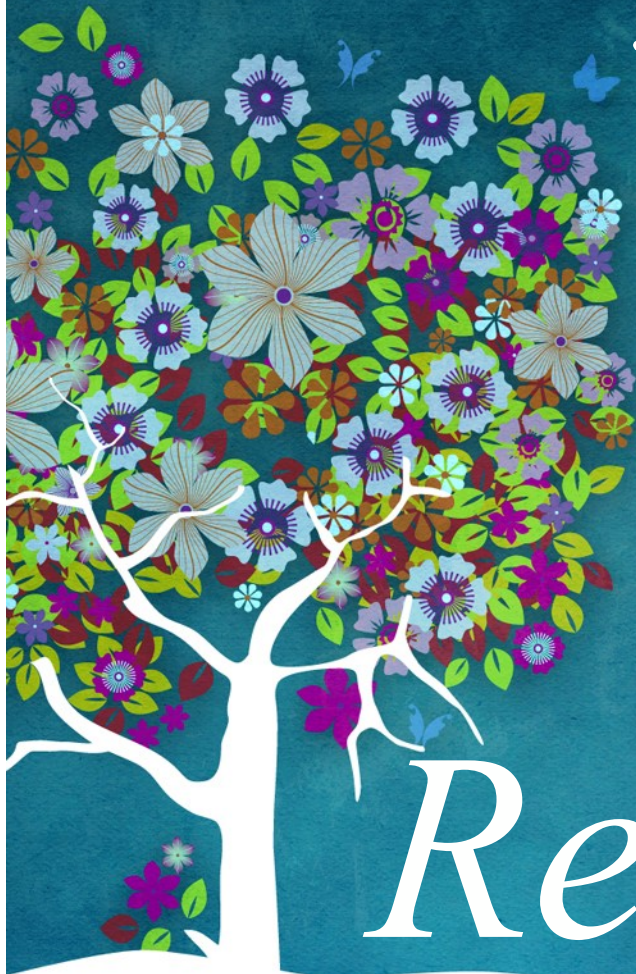


*From under the Redbud Tree.....*



# The Redbud

*The Newsletter of First Presbyterian Church*

*October, 2019*

## Inside this issue

Just Plant It

1

Birthdays & Anniversaries  
Serving in Worship in Sept.  
Cookie List

2

Church Chuckles

3

Special Dates  
Thank You from Pastor

4

Warm Someone's Heart drive

5

Coupon Program  
Women's news

6

Lectionary Readings  
Session Minutes  
Adult Sunday Bible Study

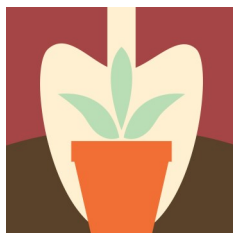
7

Calendar

8

Last Page

9



## Just Plant It

As the church year wraps up, many Bible readings address the end times and Jesus' return at an unknown date (unknown to all but God the Father, that is). Specific beliefs about the Second Coming vary throughout Christendom, but our attitude about that momentous event affects how we live right now.

"Even if I knew that tomorrow the world would go to pieces," Martin Luther reportedly said, "I would still plant my apple tree." Instead of constantly despairing about this broken-down world, we can remain determined to serve God and our neighbors, planting seeds of life and hope in the process.





Coffee and  
cookie teams

## Month of October

- 6th - Alternatives
- 13th - Building & Grounds
- 20th - Deacons
- 27th - Women's Circle #1



October 2	Sissy Wells
October 8	Lou Strong
October 14	Phil Jordan
October 15	Opal Buck
October 23	Nan Jordan
October 24	Bud Hough
October 27	Pam Guth



October 12	Mark & Pam Guth
October 23	Mari & Fred Ruegsegger

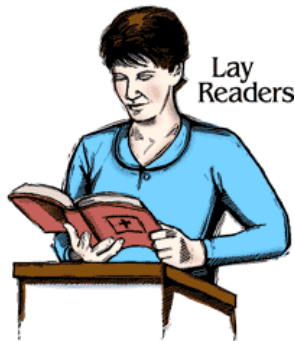


### FOR THE MONTH OF OCTOBER

- 6th - Barb Sandberg & Sarah Kelly
- 13th- Barb Sandberg & Sarah Kelly
- 20th- Linda Brozowski & Cathy Roevers
- 27th -Linda Brozowski & Cathy Roevers

**IF YOU DON'T SEE YOUR BIRTHDAY OR ANNIVERSARY, PLEASE CONTACT THE OFFICE SO WE CAN GET YOU STORED IN OUR RECORDS!! THE SAME GOES FOR ANY MISTAKES YOU MAY SEE!!**

*(We can't fix it...if we don't know it's broke!) We appreciate your help!*



Oct. 6	Ralph Gillespie
Oct. 13	Nan Jordan
Oct. 20	Nancy Priest
Oct. 27	Mary Smith

### COMMUNION SET-UP TEAM FOR OCTOBER 5, 2019

Mary Smith and  
Barbara Sandberg



**OCTOBER 6, 2019**  
**Sherman Fine & Linda Brozowski**  
**Bob & Susan Kearns**

# For the month of October

# CHURCH CHUCKLES



From a worship bulletin:

HE CAN MOVE THE MOUNTAINS.

My God is mighty to shave.

Forever author of salvation

Many people do picture God, who *saves*, with a beard!

Thanks  
Many Thanks  
Thanks  
Thanks  
Thanks

**THANK YOU!** On behalf of the Session and myself I want to thank everyone who responded to the financial commitment forms sent out this past month. We had 45 responses out of a possible 54 mailings. That, in and of itself, is tremendous. The total financial commitment we received from all those who responded was \$7250 per month. This now will give the Session members some idea as to how much we can anticipate for financial support of our ministries. We were to have met with Rev. DC Adams at our September session meeting to discuss our next steps in seeking new pastoral leadership. Unfortunately Rev. Adams was not able to attend our Session meeting due to a couple unexpected deaths in his

congregation. We will be re-scheduling a meeting with him as soon as possible. Apologies to those who took the time to attend our Session meeting last week. Hopefully we will be able to let you know when we have re-scheduled our meeting with Rev Adams. *Pastor Clark*



**World Communion Sunday**  
**Reformation Sunday**  
**Reformation Day**

**October 6, 2019**  
**October 27, 2019**  
**October 31, 2019**



It is time for Samaritan's Purse Christmas shoe boxes. A display will be in the fellowship hall with boxes to be filled and instructions. There is a change this year. NO toothpaste, candy or gum in the boxes. If you do not feel comfortable

packing a box, I will be happy to take your money and fill one for you. The deadline for turning in boxes will be **Sunday, November 17th.**

Let's **make** lots of boxes!

Thank you,

Sarah Kelly





*Help keep your neighbors warm!*

Warm  
someone's *heart*



**SUNDAY**

**October 20, 2019**

On Sunday, October 20<sup>th</sup> please bring new blankets, twin, full or queen sizes to church (we accept gently used and clean). We are also asking for new sleeping bags, rated 30° F or lower.  
(Monetary donations are accepted)

Items will be distributed through:  
**Ozark Center of Hope  
Christian Clothing Exchange**

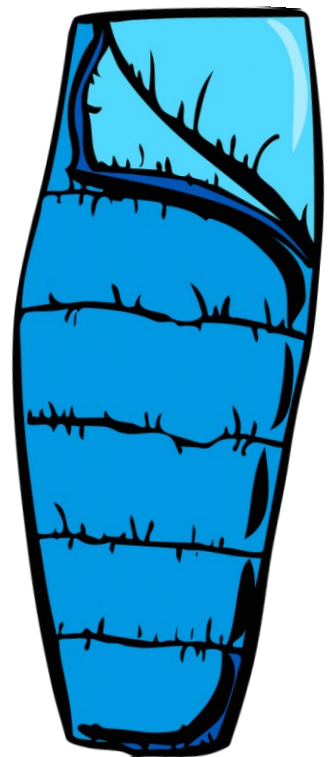
**and  
electric  
heaters!**

For more information, please contact:

**NEEDS OF MANY**

Chris Steiger 870-508-0185 or  
Bette Gould 870-492-6710

Needs of Many is a non-profit organization under section 501(c)(3) of the Internal Revenue Code



**Also needing electric heaters.**

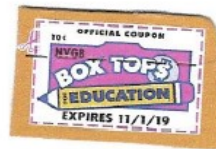
**THANK YOU!!**



A great big THANK YOU to all you church members who have been saving your Best Choice and Campbell's bar codes, and also the Box Tops for Education from your food purchases. This week I was able to mail in 1000 Best Choice labels for which we will receive \$60 for our Women's Circles. This money is used to help support organizations right here in Mountain Home that help a lot of people. The Campbell's bar codes and Box Tops for Educations are sent to Goodland Presbyterian Boys Academy in Oklahoma and they send them in for school supplies for their boys. These are all worthy causes and we're proud to help. One thing I must mention is that the Box Tops for Education have expiration dates on each one, so don't save them for a long time. Turn them in as soon as you can so they can be used or else they will all be void.

Best Choice food products can be bought at Harp's or Town & Country and are on all kinds of their food products: cheese, eggs, cereals, canned goods, cake mixes, flour, sugar, rice, etc., etc...so please look for them. Cut them out and deposit them in the box in the Fellowship Hall or bring them in to the office. Thank you all again for helping the Women's Circles with their projects.

Lillian Euers



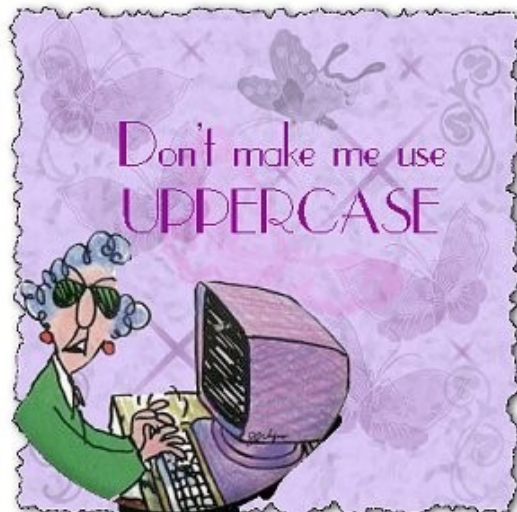
The Women's meeting is Tuesday, October 1, 2019 at 1:00 p.m. at the Church Fellowship Hall.

The Lesson: 9<sup>th</sup> chapter in the new book "I Am With You Always."

The Hostess: Judy Sulephen The Leader: Loweta Rogers.

Please continue to collect Best Choice labels for us.

All ladies are welcome to our meetings. Come Join Us!!





## Scripture Readings for the month of October

### SESSION HIGHLIGHTS

The Session of the First Presbyterian Church of Mountain Home, Arkansas, met for a Stated Session meeting on Friday, May 21, 2019, at 10:30 p.m.

The session meeting day and time has been changed from 3<sup>rd</sup> Tuesday to the 3<sup>rd</sup> Friday of each month and the time has been changed from 12:30 pm to 10:30 am to adjust to session members schedules.

### NO SESSION MINUTES

Thank you, you are able to see a complete copy of session minutes or committee reports in the mail room.

Mari Ruegsegger  
Clerk of Session

Sunday, Oct. 6th

*17th Sunday after Pentecost*

Habakkuk 1:1-4, 2:1-4

Psalm 37:1-9, 2 Timothy 1:1-14

Luke 17:5-10

Sunday, Oct. 13th

*18th Sunday after Pentecost*

2 Kings 5:1-3, 71-15c, Psalm 111,

2 Timothy 2:8-15

Luke 17:11-19

Sunday, Oct. 20th

*19th Sunday after Pentecost*

Genesis 32:22-31, Psalm 121,

2 Timothy 2:14—4:5m

Luke 18:1-8

Sunday, Oct. 27th

*20th Sunday after Pentecost*

Jeremiah 14:7-10, 19-22;

Psalm 84:1-7,

2 Timothy 4:6-8, 16-18

Luke 18:9-14

## Grand Opening



Please join:  
**Hospice of the Ozarks**  
**For our grand opening!**  
**Friday, October 11, 2019**  
**8:00 a.m. to 7:00 p.m.**

**At the New Administrative/  
Warehouse Building at 811 Burnett  
Drive, Mountain Home, Arkansas  
(Next to the Hospice House).**

- ⇒ **Tours will be given throughout the day & refreshments served. Ribbon cutting at noon.**
- ⇒ **No RSVP required-open to the Community.**



# REDBUD CALENDAR OCTOBER, 2019

Sunday	Monday	Tuesday	Wednesday	Thursday	Fri	Sat
		<b>1</b>  1 pm-Women's Circles	<b>2</b> 10 am - Lectionary Bible Study 2:00 p.m.— Mission Cmte. 1:00 p.m. - Choir practice 	<b>3</b>	<b>4</b> C L O S E D	<b>5</b>
<b>6</b> 9am—Adult Sunday School 10am - Worship Service/ Communion 11am - Coffee hosted by Mission Committee 11am - Blood Pressure Screening-Deacons offering 	<b>7</b> 9 am - Counters  <b>OFFICE WILL CLOSE AT 12:00 NOON</b>	<b>8</b> 	<b>9</b> 10 am - Lectionary Bible Study 11:00 Worship Committee  1 pm Choir practice	<b>10</b>  Master Gardeners meet at 12noon 	<b>11</b> C L O S E D	<b>12</b>
<b>13</b> 9am—Adult Sunday School 10am - Worship Service Copper Kettle offering 11am - Coffee hosted by Building & Grounds	<b>14</b> 9 am - Counters  	<b>15</b> 10:00 am - <b>NO Deacons Meeting this month</b>  	<b>16</b> 10 am - Lectionary Bible Study 11:15 am - Ministry Cmte.  1:00 p.m. - Choir Practice	<b>17</b>  <b>SESSION MEETS FRIDAY AT 10:30 am</b>  SESSION MEETS	<b>18</b> C L O S E D	<b>19</b>
<b>20</b> 9am—Adult Sunday School 10am - Worship Service 11am - Coffee hosted by Deacons	<b>21</b> 9 am - Counters	<b>22</b>  	<b>23</b> 10 am - Lectionary Bible Study 1:00 p.m. - Choir Practice	<b>24</b>  	<b>25</b> C L O S E D	<b>26</b>
<b>27</b> 9am—Adult Sunday School 10am - Worship Service 11 am - coffee hosted by Women's Circle #1 	<b>28</b> 9 am - Counters 	<b>29</b> 	<b>30</b> 10 am - Lectionary Bible Study 1:00 p.m. - Choir Practice	<b>31 Halloween</b>  Trunk or Treat	<b>C L O S E D</b>	
	I've learned so much from my mistakes..... I'm thinking of making a few more!			<b>Publication Deadlines</b>  Weekly bulletin - Wednesday afternoon by 2:00 pm Newsletter - Redbud deadline - <b>MONDAY, OCTOBER 28th</b> Please submit all articles in writing. You may drop them off at the office or email to Connie McLaurin: fpcmh@centurytel.net Thank you for your understanding and cooperation.		



Church Office Hours  
9:00 a.m. - 3:00 p.m. Monday - Thursday

Church Mailing Address:  
1106 Spring Street  
Mountain Home, AR 72653  
870-425-3799

fpcmh@centurytel.net  
Website: [www.fpcmh.net](http://www.fpcmh.net)

Rev. Mike Clark,  
Transitional Pastor

Adult Sunday School: 9:00 a.m.  
Sunday Worship: 10:00 a.m.  
Fellowship Coffee: 11:00 a.m.

Secretary: Connie McLaurin  
Support Staff: Marilyn Wheat  
Barb Sandberg

Bookkeeper: Nancy Priest



First Presbyterian Church  
1106 Spring Street  
Mountain Home, AR 72653

**RETURN SERVICE REQUESTED**



**First Presbyterian Church  
1106 Spring Street  
Mountain Home, AR 72653**

**RETURN SERVICE REQUESTED**



**Church Office Hours  
9:00 a.m. - 3:00 p.m. /Monday - Thursday**

**Church Mailing Address:  
1106 Spring Street  
Mountain Home, AR 72653  
870-425-3799**

**fpcmh@centurytel.net  
Website: [www.fpcmh.net](http://www.fpcmh.net)**

**Rev. Mike Clark,  
Transitional Pastor**

**Adult Sunday School: 9:00 a.m.  
Sunday Worship: 10:00 a.m.  
Fellowship Coffee: 11:00 a.m.**

**Secretary: Connie McLaurin  
Support Staff: Marilyn Wheat  
Barb Sandberg  
Bookkeeper: Nancy Priest**